



ADDENDUM

- **Zeus² sw release 2.0**
- **Zeus² Glass Helm sw release 2.0**

This addendum covers changes to Zeus² included in software upgrade version 2.0 and changes to Zeus² Glass Helm included in software upgrade version 2.0.

Feature	Refer
Wireless connections	page 2
• Connect and disconnect from a wireless hotspot	page 2
• GoFree Shop	page 2
• GoFree controller & Viewer	page 2
• Uploading log files to Insight Genesis	page 3
• Wireless settings	page 3
• Recording log data	page 3
• Stop recording log data	page 4
Sail Steer overlay	page 5
ForwardScan	page 6
• The ForwardScan image	page 6
• Setting up the ForwardScan image	page 7
• ForwardScan view options	page 7
• ForwardScan setup	page 8
• Critical forward range and Critical depth	page 8
• Transducer angle	page 8
• Heading extension	page 9

Wireless connection

GoFree wireless connectivity gives you the ability to:

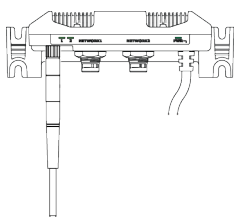
- Use a wireless device to remotely view (smartphone and tablet) and control the system (tablet only).
- Access the GoFree Shop.
- Upload your Echosounder logs to create custom maps at Insight Genesis.
- Download software updates
- Connect to third party applications



You must connect a WIFI-1 unit to the system to provide wireless functionality.

Installation and wiring of the WIFI-1 unit are described in the separate WIFI-1 Installation Guide. Configuration and setup are described in your system's installation manual.

- **Note:** For security purposes we recommend that you change the administrator password of the WIFI-1 unit.



Connect and disconnect from a wireless hotspot

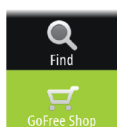


To connect to a wireless hotspot, select the Connect Wireless option in the System Controls dialog. This opens the Wireless Devices dialog. Use this dialog to select the desired hotspot, and enter the login information. Connecting to a wireless hotspot changes the wireless mode to **Client mode**. In this mode you can access the GoFree Shop.



To disconnect from a wireless hotspot, select the disconnect wireless option in the System Controls dialog. This changes the wireless mode to **Access point mode**. In this mode you can connect a wireless device so that Apps such as GoFree Controller & Viewer can access the vessel's navigation information.

GoFree Shop



The WIFI-1 must be connected to an external wireless hotspot in order to access the GoFree Shop from the Tools panel.

At the GoFree Shop you can browse, purchase and download compatible content for your system including navigation charts and Insight Genesis Maps. When you log on, the system automatically gives you a notification if a new software version is available for your system. If an update is available, you can download it to a card slot or defer the download until later. If you defer the download until later, the notification is available in the About dialog accessible from the System Settings.

GoFree Controller & Viewer



The wireless functionality lets you use a wireless device to remotely view (smartphone and tablet) and control the system (tablet only). The system is viewed and controlled from the wireless device by the GoFree Controller & Viewer Apps downloaded from their relevant Application store. When remote control is accepted, the active page is mirrored to the wireless device.

- **Note:** To use smartphones and tablets to view and control the system, wireless functionality must be disconnected from the wireless hotspot (in **Access point mode**).

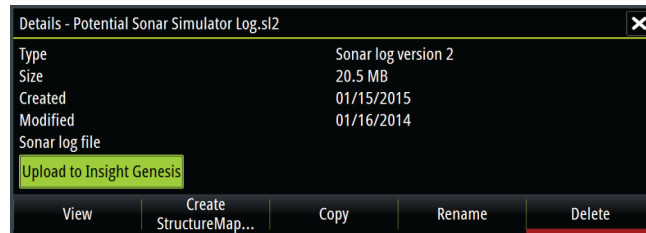
→ **Note:** For safety reasons, Autopilot and CZone functions cannot be controlled from a wireless device.

Uploading log files to Insight Genesis

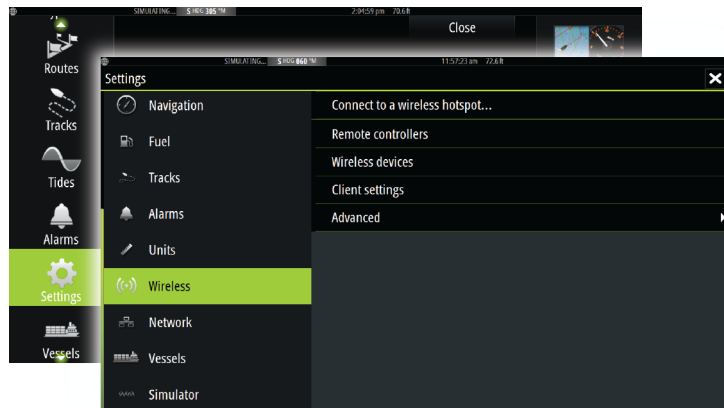
To upload a recorded Echosounder log file to Insight Genesis, select the file you want to upload from the Files panel and select the upload to Insight Genesis option.

→ **Note:** You must be connected to a wireless hotspot to upload recorded log files to Insight Genesis.

→ **Note:** Recorded log files can also be uploaded to Insight Genesis if you have specified **Upload to Insight Genesis** in the Record Echo dialog. For more information, refer to "Recording log data" on page 3.



Wireless settings



Provides configuration and setup options for the wireless functionality. Setup for the Wireless settings dialog is described in the Installation Manual with the exception of the following new options:

Connect to a wireless hotspot

Displays the Wireless device dialog that you can use to connect the wireless functionality to a wireless hotspot.

Client settings

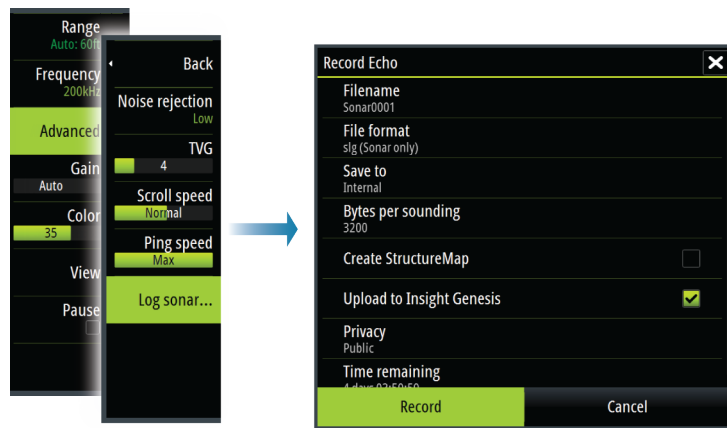
Displays information about the wireless hotspot your unit is connected to or the last one your unit was connected to. You can select the hotspot in the dialog to set it as a hotspot you want to always connect to when in range or you can select to delete it.

Recording log data

You can record Echosounder and StructureScan log data and save the file internally in the Zeus² unit, or save it onto a card inserted into the unit's card reader.

The function is activated from the **Advanced** menu option.

When the Echosounder image is being recorded, there is a flashing red symbol in the top left corner and a message appears periodically at the bottom of the screen.



The following new options are available in the **Record Echo** dialog:

Upload to Insight Genesis

Files are transmitted to Insight Genesis when recording completes, if you are connected to a wireless hotspot. For information about wireless hotspots, refer to *"Wireless connection"* on page 2.

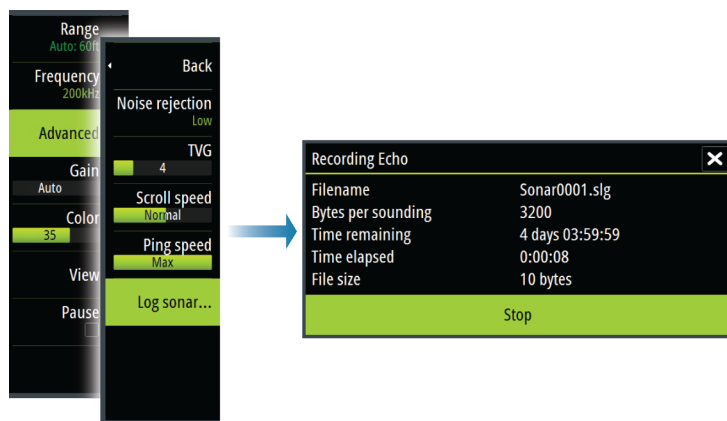
Privacy

If you have a Premium Insight Genesis account, you can set the recorded log files as **Private** at Insight Genesis. Otherwise, all log files uploaded are **Public**.

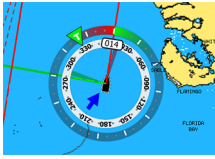
Stop recording log data

Select **Stop** in the Recording Echo dialog to fully stop the recording of all echosounder data.

- **Note:** If you have selected the **Upload to Insight Genesis** option and are connected to a wireless hotspot, your recorded files are transmitted to Insight Genesis when you select **Stop**.



Sail Steer overlay



You can overlay the Sail Steer image on the Chart. You toggle the Sail Steer image overlay on and off in the Chart setting dialog.

- **Note:** If both the Sail Steer image and autopilot compass overlays are enabled then only the Sail Steer overlay is shown.
- **Note:** Sail Steer overlay is not shown when the cursor is activate or when panning the chart. Select the clear cursor option to display the Sail Steer overlay again.
- **Note:** If the **Look ahead** menu option is selected, then the **Heading up** orientation must also be selected in order to display the Sail Steer overlay. If the **Look ahead** menu option is not selected, then the Sail Steer overlay is displayed with all the orientation settings: **North up**, **Heading up**, and **Course up**.



ForwardScan

ForwardScan sonar is a navigational aid that helps you monitor the underwater environment in front of your vessel.

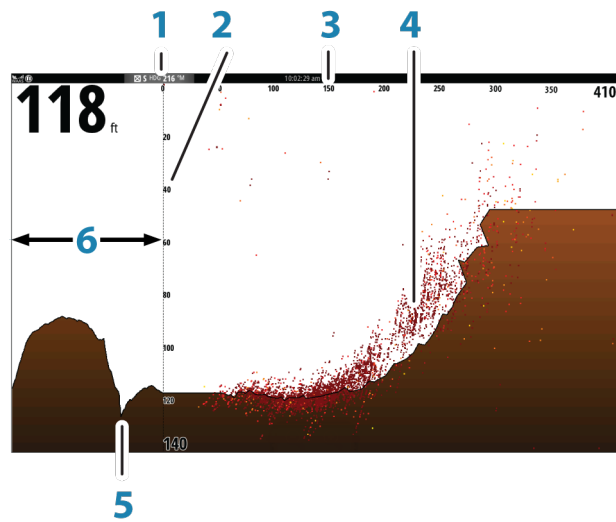
To use the ForwardScan feature you must have a ForwardScan transducer mounted on your vessel. For installation instructions, refer to the ForwardScan transducer installation manual.

The ForwardScan transducer can be connected to a SonarHub and shared over the Ethernet network.

⚠ Warning: Do not rely on this equipment as your principle source of navigation or hazard detection.

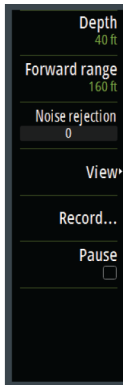
⚠ Warning: Do not use this equipment to gauge depth or other conditions for swimming or diving.

The ForwardScan image



- 1 Transducer location shown as the origin on the page
- 2 Depth range scale and vessel position
- 3 Forward range scale
- 4 Point data
- 5 Bottom
- 6 Depth history

Setting up the ForwardScan image



Depth

Controls depth range. Depth range is set to auto mode by default.

Forward range

Controls the forward looking search range. Maximum Forward range is 91 meters (300 feet).

Noise Rejection

Filters out signal interference and reduces on-screen clutter.

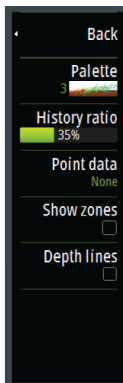
Record

Records ForwardScan sonar logs.

Pause

Pauses forward-looking Echosounder transmissions.

ForwardScan view options



Palette

Several display palettes are available for a variety of water conditions.

History ratio

Controls how much Echosounder history is shown behind the boat. The higher the ratio, the more history will be shown.

Point data

By default, ForwardScan only shows the bottom. Select the Point data menu option to specify to view no sonar data points, all sonar data points, or only points (Objects) in the water column.

Show zones

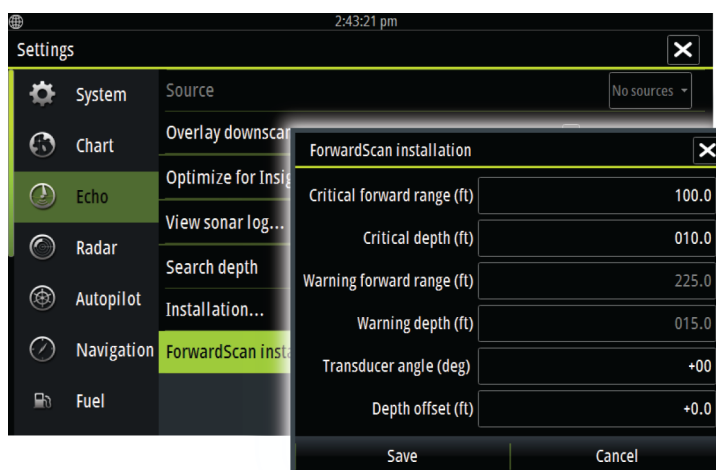
Displays warning zones (yellow) and critical zones (red) on the screen. Refer to "*Critical forward range and Critical depth*" on page 8.

Depth lines

Displays lines on the screen that make it easier to quickly estimate depth and the underwater objects.

ForwardScan setup

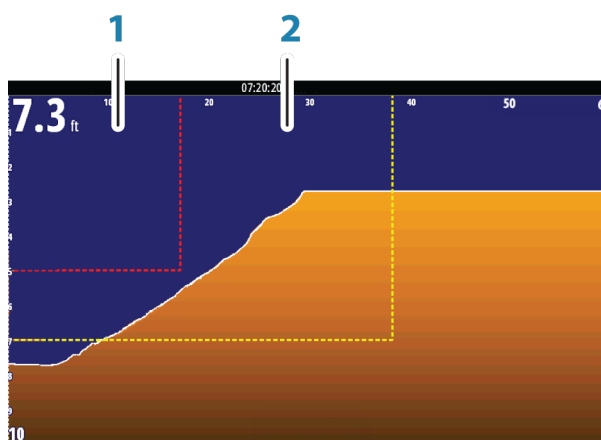
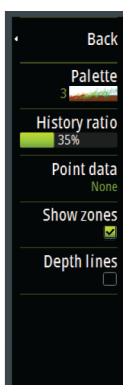
Specify the setup in the **ForwardScan installation** dialog.



Critical forward range and Critical depth

Critical Forward Range and Critical Depth are user-selected thresholds that define a critical zone forward of your vessel.

If you travel into water shallow enough to cross into the critical zone, the Critical Zone alarm is activated. You can display the critical warning zones by activating the **Show zones** menu option.



ForwardScan image with Show zones active

- 1 Critical zone
- 2 Warning zone

Warning Forward Range and Warning Depth values are based on the selected Critical Forward Range and Critical Depth values.

→ **Note:** To receive Critical Zone alerts, enable ForwardScan alarm in the Alarm settings dialog. For more information about enabling alarms, refer to Alarms.

Transducer angle

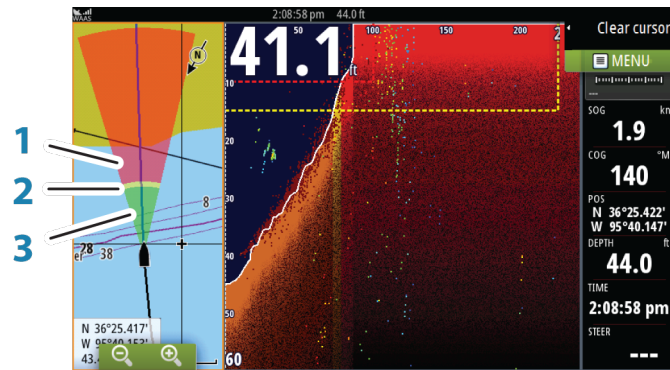
We recommend installing the transducer vertical to the waterline. In cases where that is not possible, the Transducer Angle setting helps offset the difference between the transducer angle and the waterline.

The angle can be adjusted from 0 (vertical) to 20 degrees.

⚠ Warning: Adjustments to the transducer angle value should be done with caution. Large variations in the transducer angle value can distort depth data, increasing the risk of striking underwater obstructions.

Heading extension

You can use the heading extension to monitor ForwardScan on the chart panel. Heading extension colors are based on the ForwardScan alarm values.



ForwardScan extension

- 1 Green - Safe
- 2 Yellow - Warning
- 3 Red - Critical

Select ForwardScan in the Chart Settings dialog to view the ForwardScan heading extension on the chart panel.

