

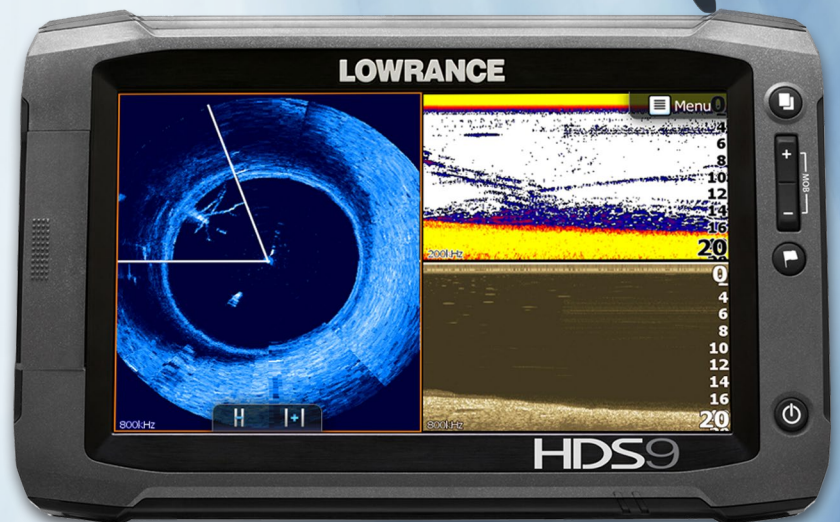
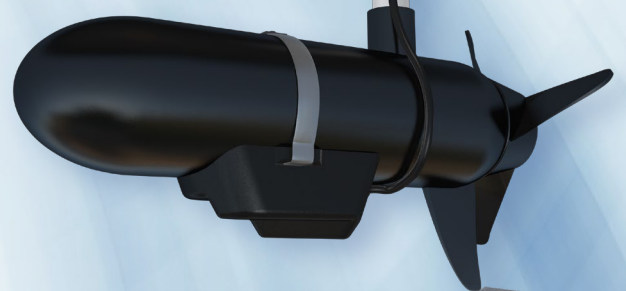
LOWRANCE® SpotlightScan™ Sonar

Angler-controlled, surround-scanning views for picture-like images of key fishing areas on your HDS Gen2* or HDS Gen2 Touch display.

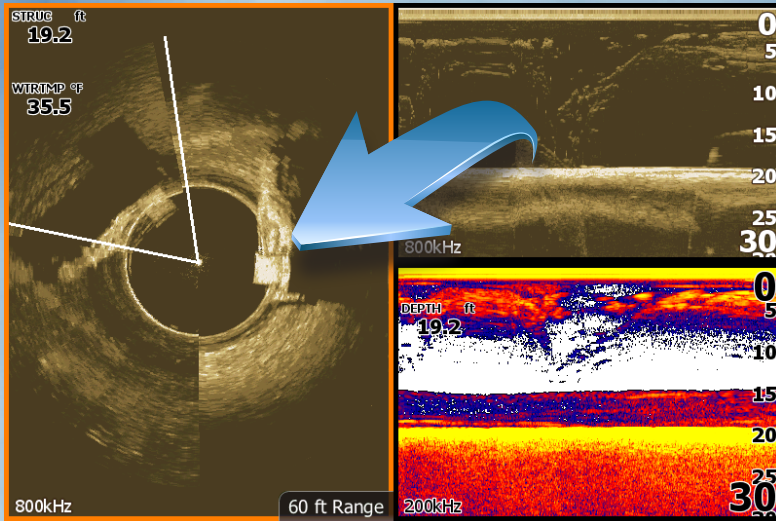


SpotlightScan™ Sonar FEATURES

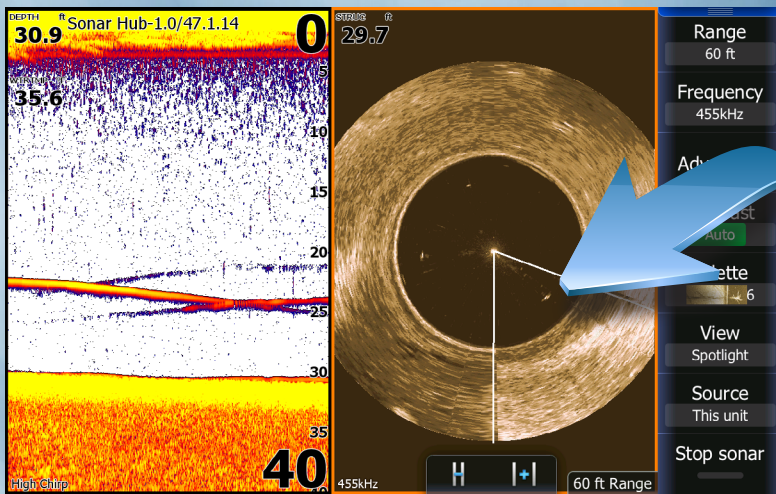
- Quickly identify key fishing areas before you make the first cast.
- SpotlightScan™** transducer also features DownScan Imaging™ and Broadband Sounder™ for the best possible view beneath your boat.
- Affordable and easy to install.
- Do-it-yourself, bow-mount installation for foot-control, cable-steer trolling motors.
- With **SpotlightScan™** Sonar, the angler has complete control – simply by using the remote foot pedal—of the **SpotlightScan™** sonar direction and scanning speed—all without having to make additional menu adjustments on the HDS Gen2 display.
- NMEA 2000® Starter Kit (part number 000-0124-69) required for installation.



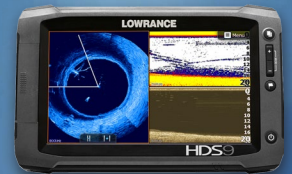
LOWRANCE® SpotlightScan™ Sonar



Pinpoint
Fish-Holding
Structure Like This
Houseboat



Identify
Suspended Fish In
Open-Water Areas



For your HDS Gen2® or
HDS Gen2 Touch display.



Watch Our
SpotlightScan™
Videos!



Go to <http://www.lowrance.com/en-US/Products/Sonar/SpotlightScan-Sonar-en-us.aspx>
and watch education and testimonial videos on SpotlightScan™ Sonar.

Part No.	Barcode	Description	MAP
000-11303-001	9420024128442	SpotlightScan™ Trolling Motor Transducer	\$499
000-11304-001	9420024128459	SpotlightScan™ Trolling Motor Transducer With SonarHub™ Module	\$999

*HDS Gen2 (non Touch) models require SonarHub™ Sounder Module for SpotlightScan™ Sonar operation