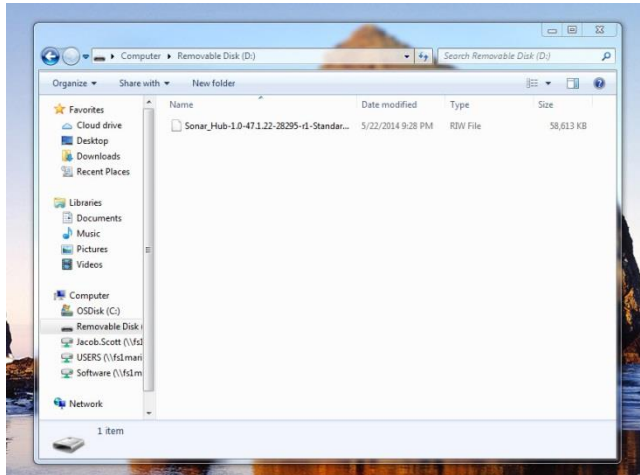
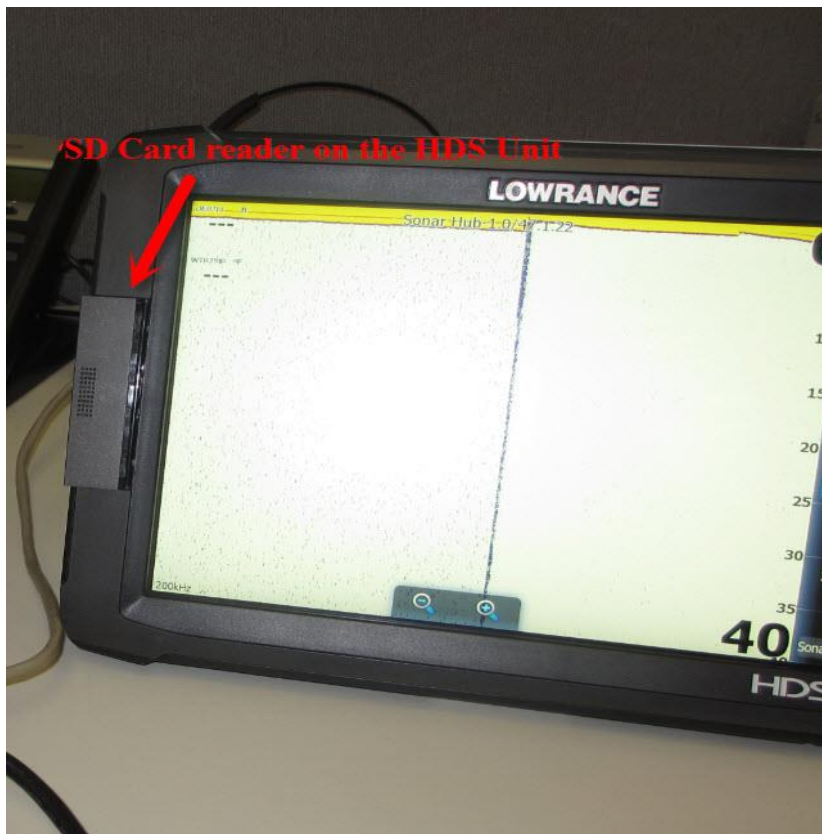


Upgrading Lowrance SonarHub Software

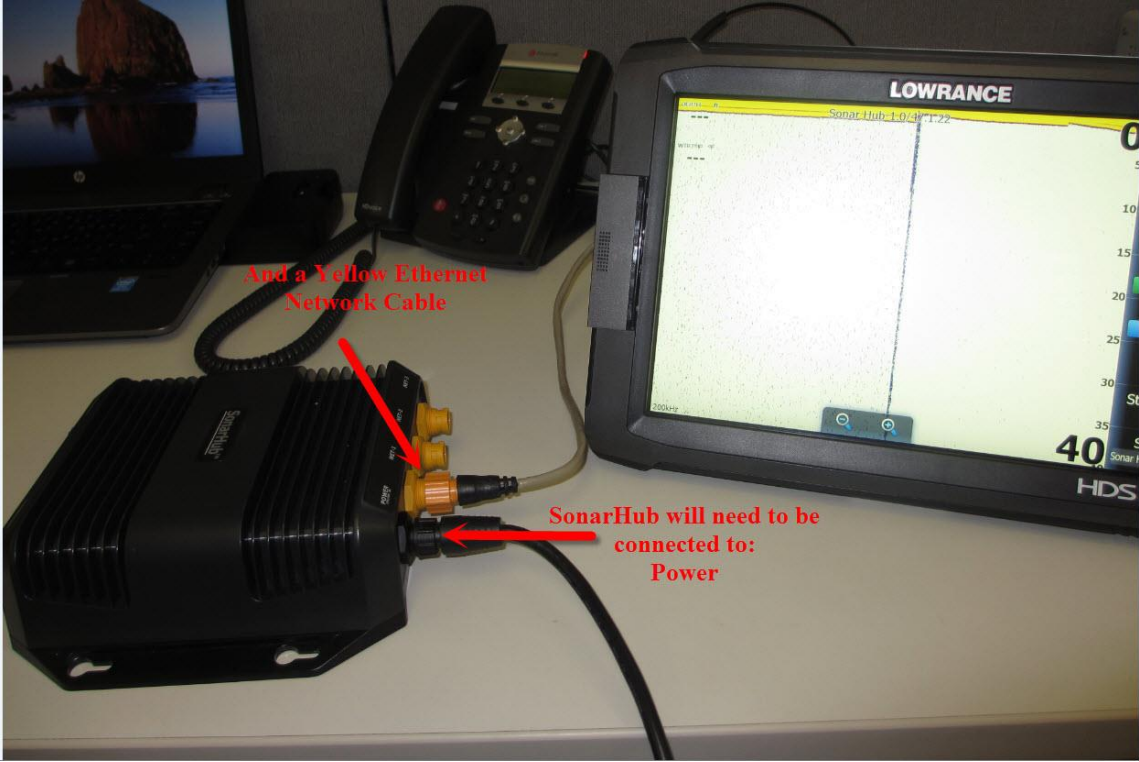
Take the SD card and verify the software is on the card, using a computer.



Insert the SD card into the card reader on the HDS unit. (*Top or Bottom slot, it does not matter*)

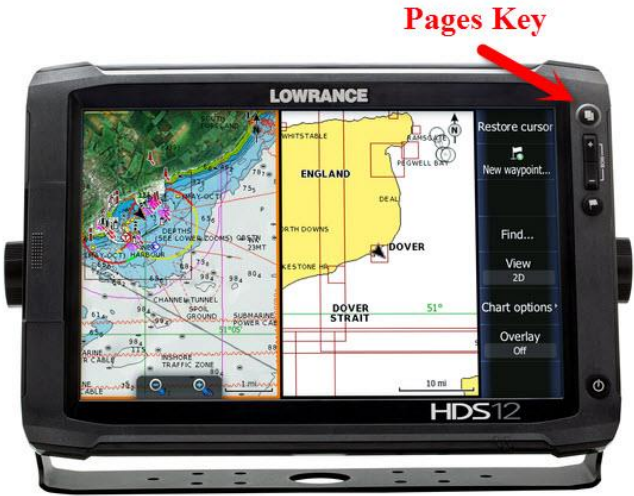


Connect the SonarHub to a Lowrance HDS unit. The SonarHub will need to be connected to the black power cable and the yellow Ethernet network cable should be connected from the HDS unit to the SonarHub.

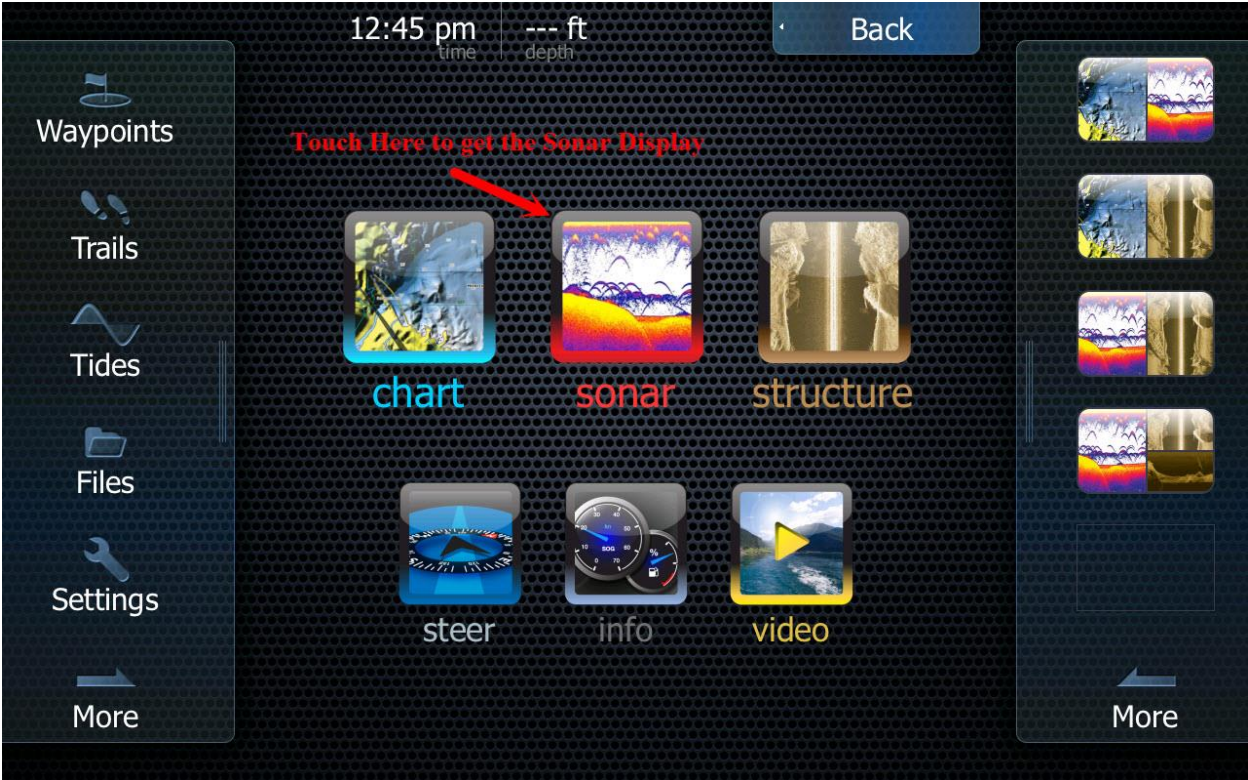


Once connected, it will take a few minutes for the SonarHub to fully power-up and be functional.

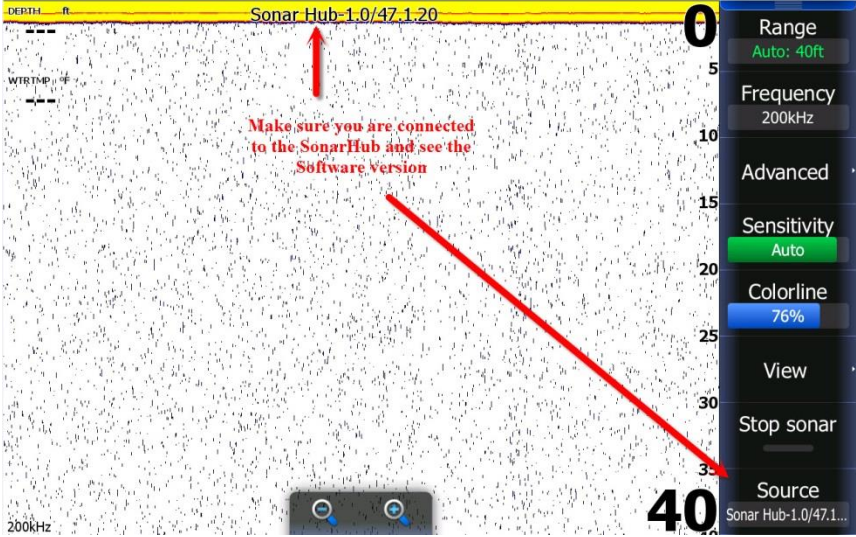
Press the Pages Key in the upper right corner of the HDS unit to get to the main screen



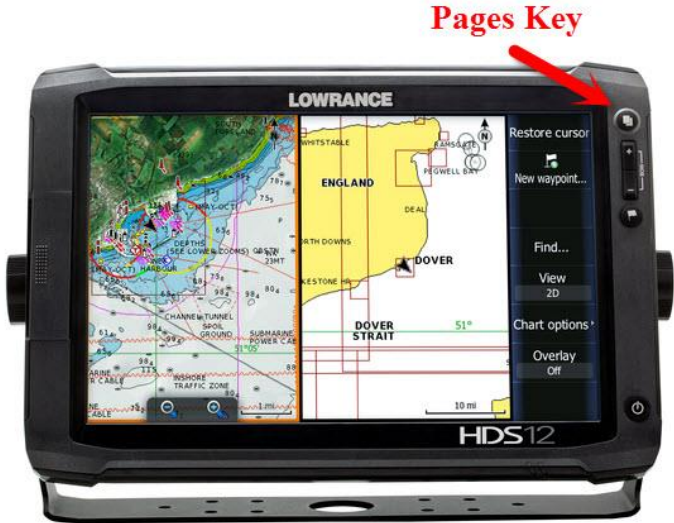
From this Main Screen, you are going to want to select the Sonar function. (Image – 4)



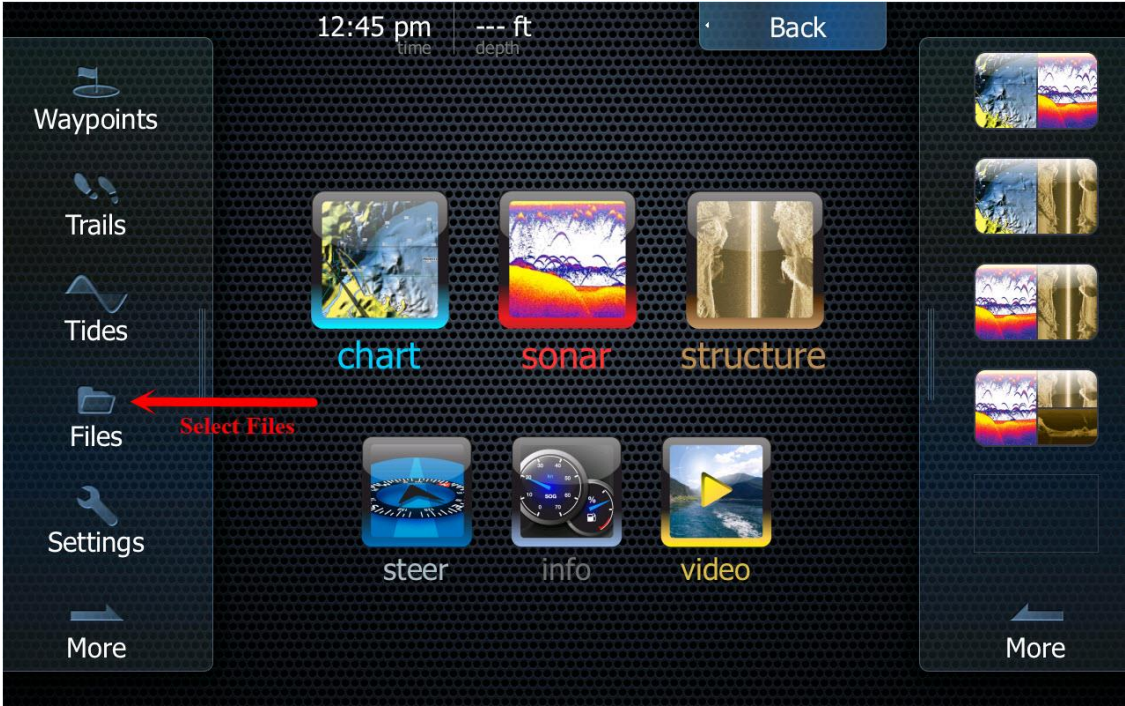
Once the SonarHub is powered up and operational, you will see the indicators on the screen, showing the SonarHub is ready to be upgraded.



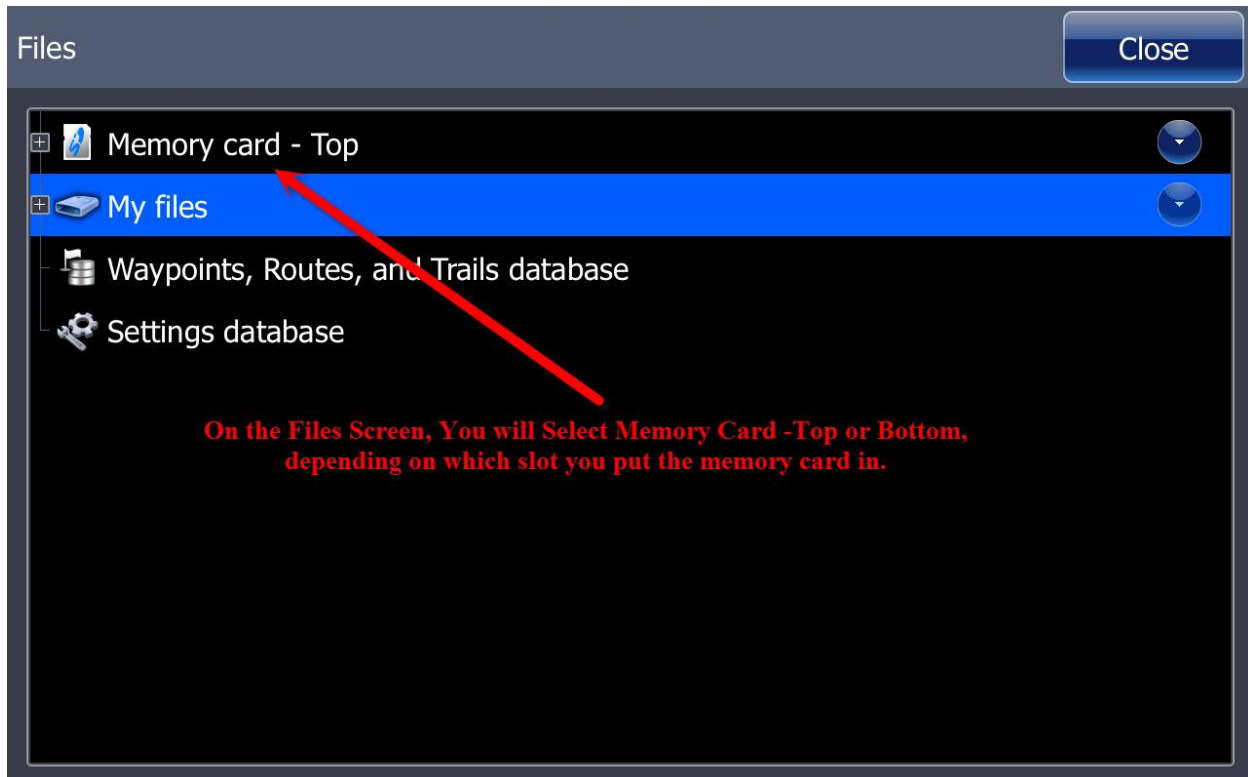
Press the Pages Key again.



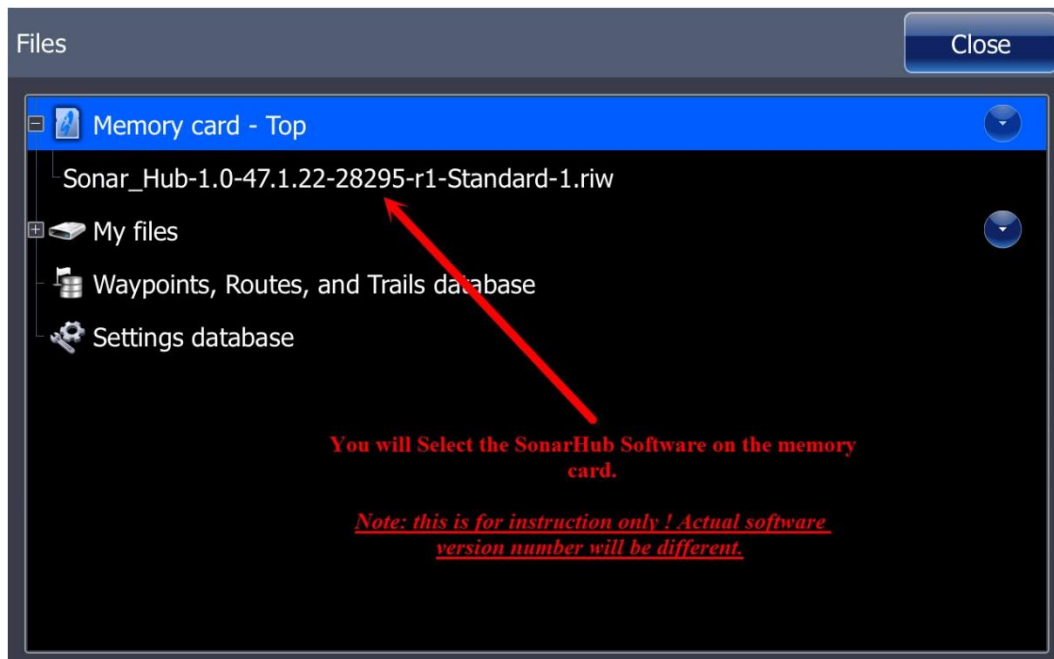
From the Main Screen, Select Files (Located on the left side of the screen)



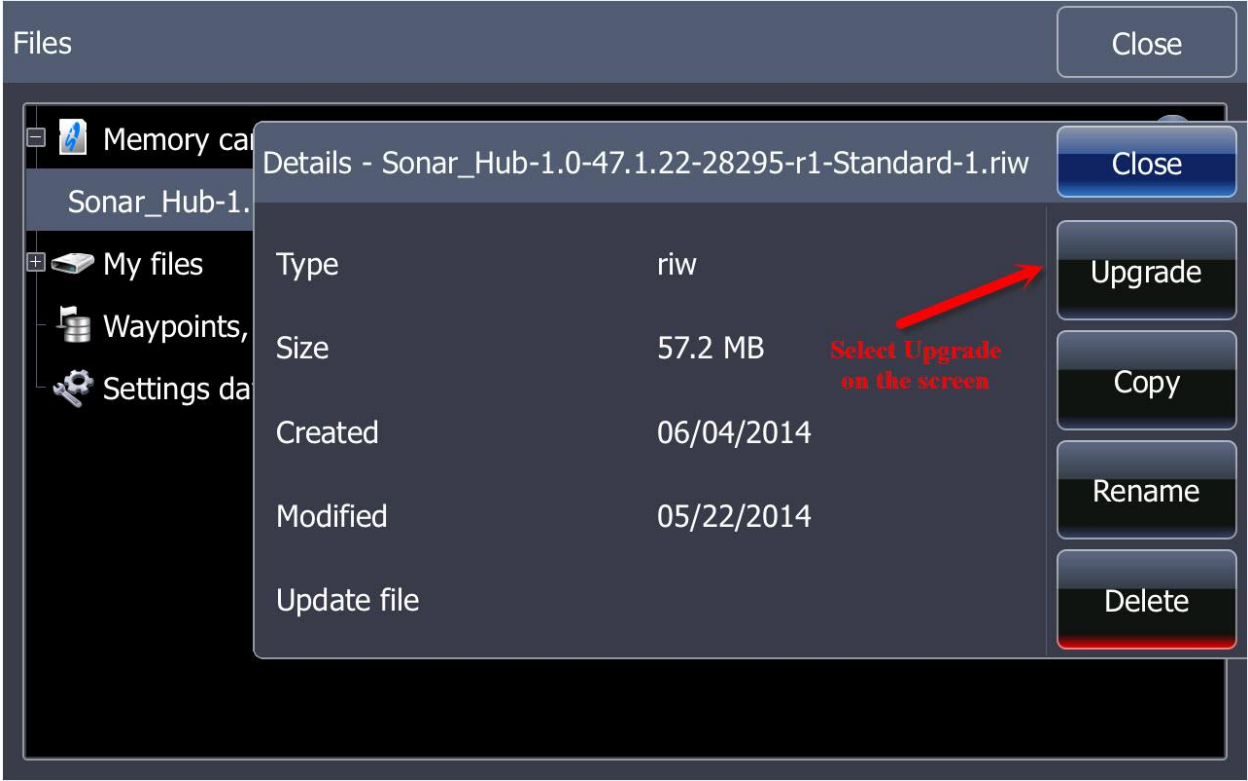
On the Files screen, you will select the Memory card (*Top or Bottom*)



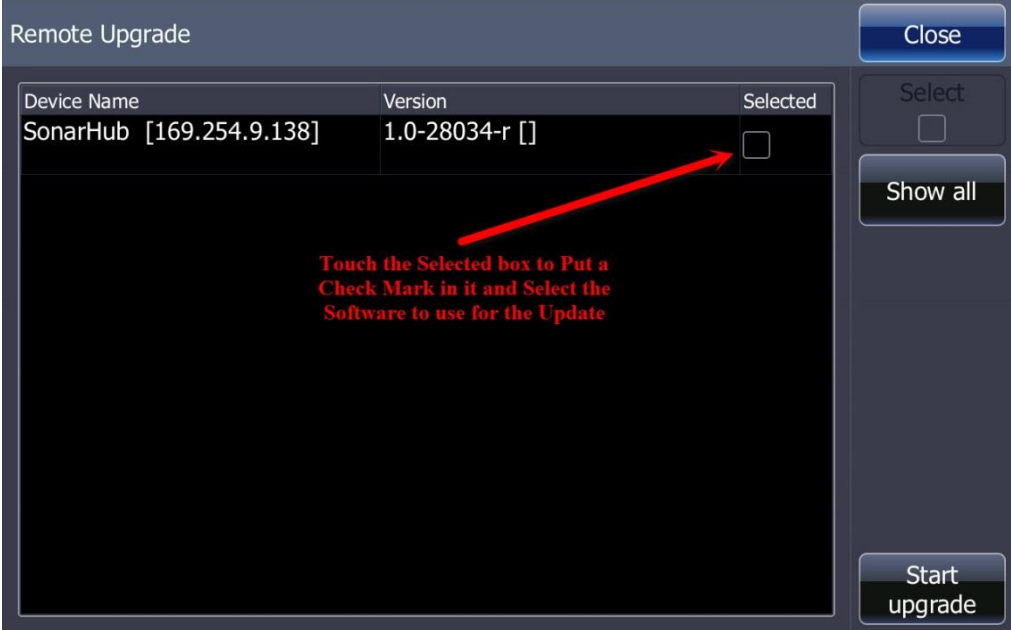
On this screen, you will see the software for the SonarHub. Select the SonarHub software for the upgrade.



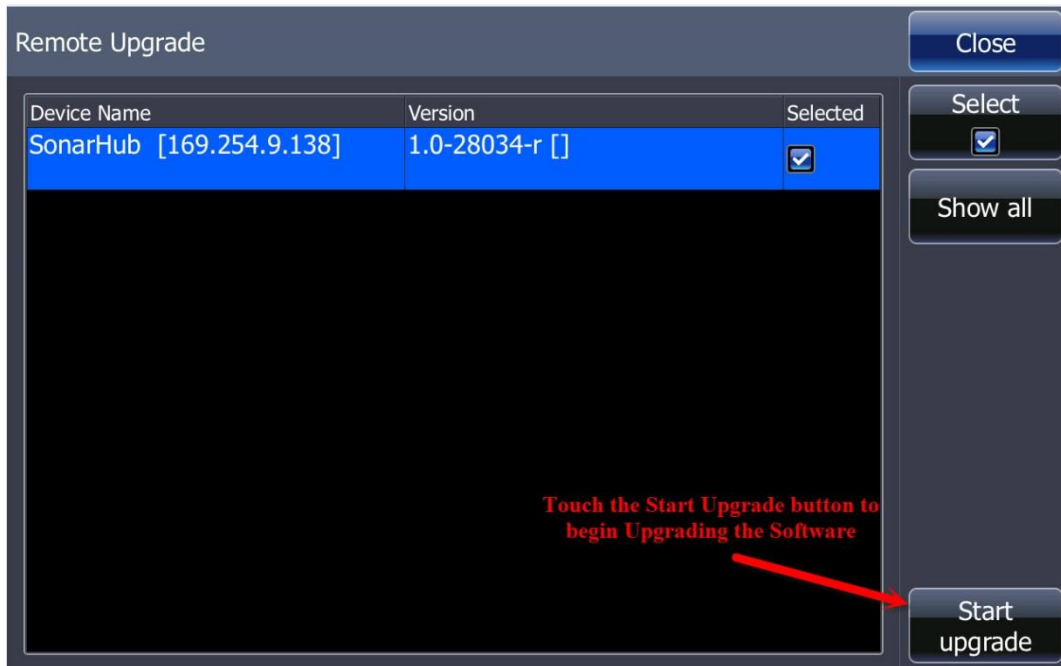
Once you have selected the SonarHub software, you will get the prompt to begin the upgrade. Touch Upgrade for the upgrade process to begin.



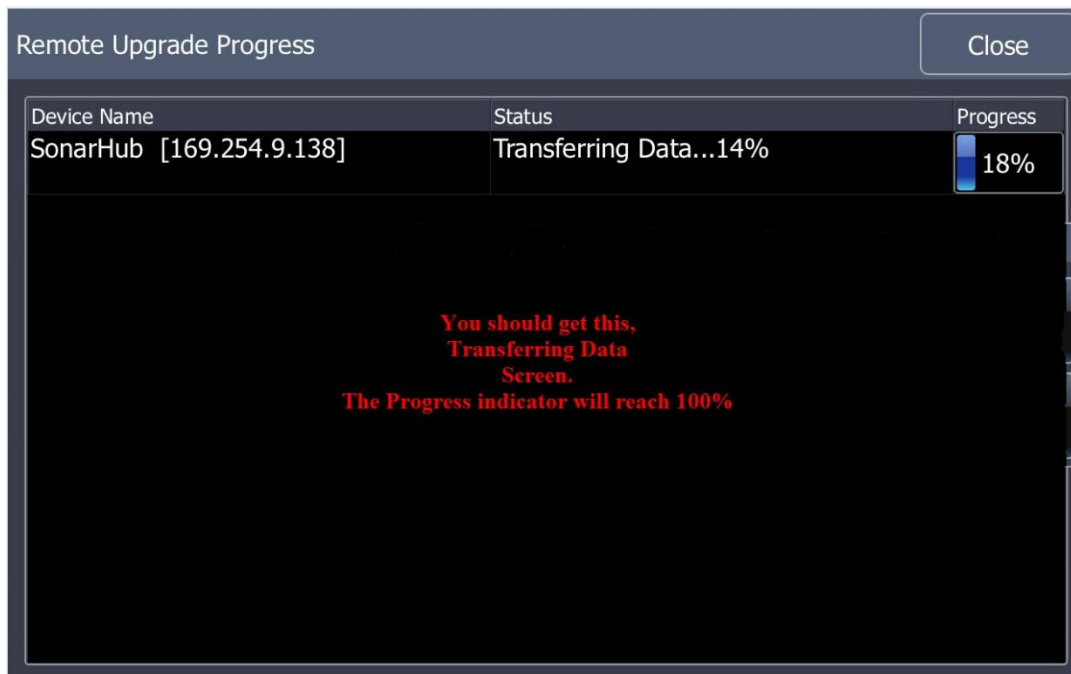
Next, you will need to select the SonarHub to be Upgraded.



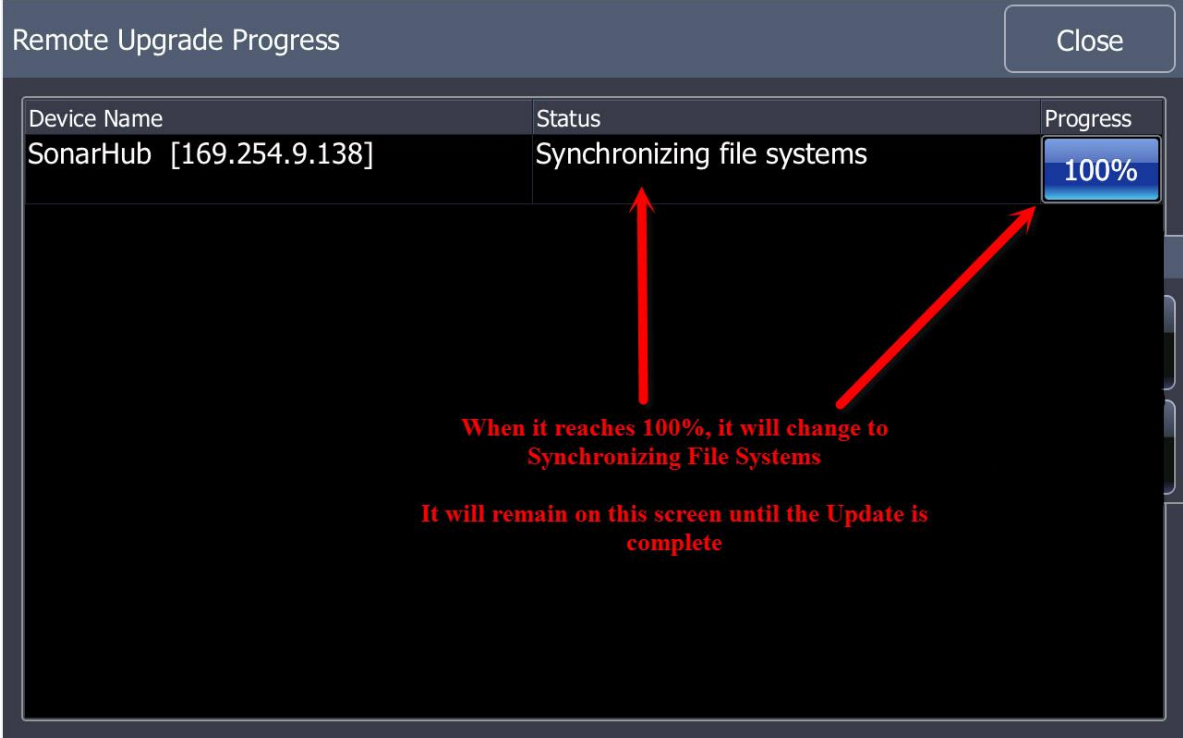
Once you have selected the SonarHub by putting a check mark in the box, you will then touch the Start Upgrade button in the bottom right of the screen.



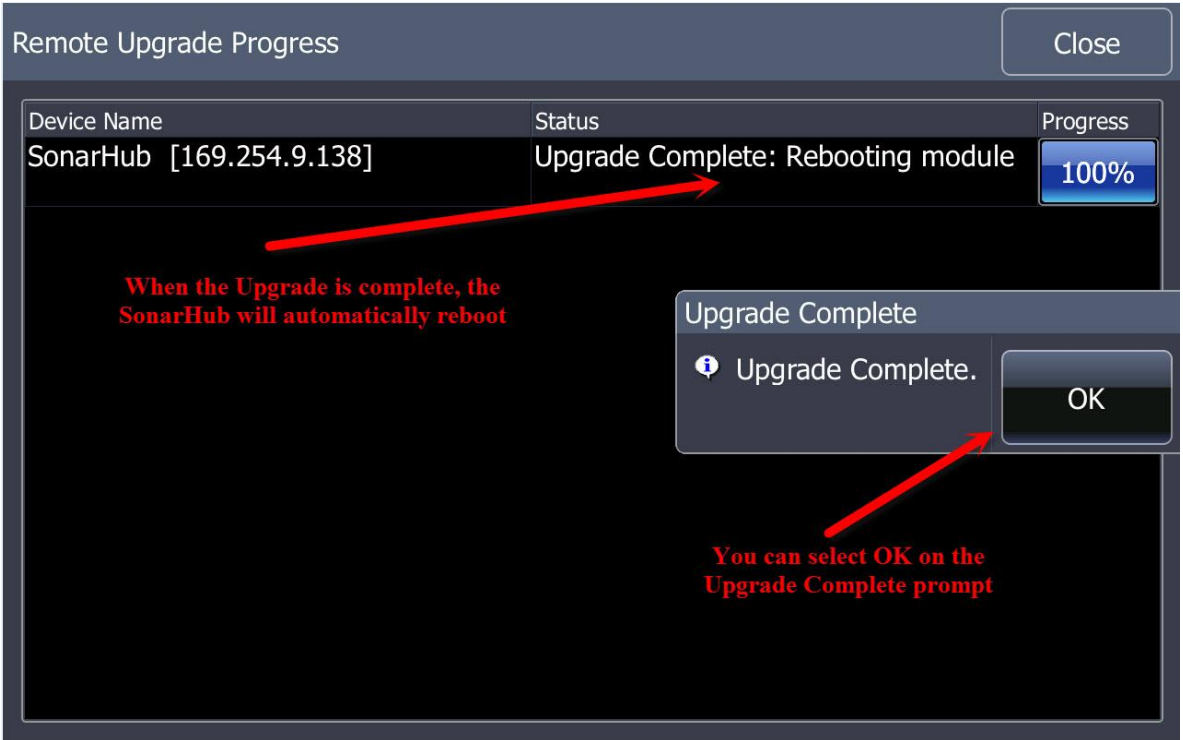
The unit will start Transferring Data from the SD card to the SonarHub.



When the Data Transfer reaches 100%, Synchronizing File System will appear on the screen; this is the SonarHub upgrading the software and it will remain on this screen until the upgrade is complete.



When the upgrade is complete, a prompt will pop up on the screen saying Upgrade Complete. Select OK.



The Screen will show Upgrade Complete: Rebooting module. This is the SonarHub power-cycling and it will take a few minutes to power-up. At this point, it is OK to press Close, until you get back to the Sonar Screen.

Device Name	Status	Progress
SonarHub [169.254.9.138]	Upgrade Complete: Rebooting module	100%

The Upgrade is now complete. Touch Close until you are back to the Sonar screen

DEPTH ft

Sonar Hub-1.0/47.1.20

0

5

10

15

20

25

30

35

40

200kHz

Range
Auto: 40ft

Frequency
200kHz

Advanced

Sensitivity
Auto

Colorline
76%

View

Stop sonar

Source
Sonar Hub-1.0/47.1...

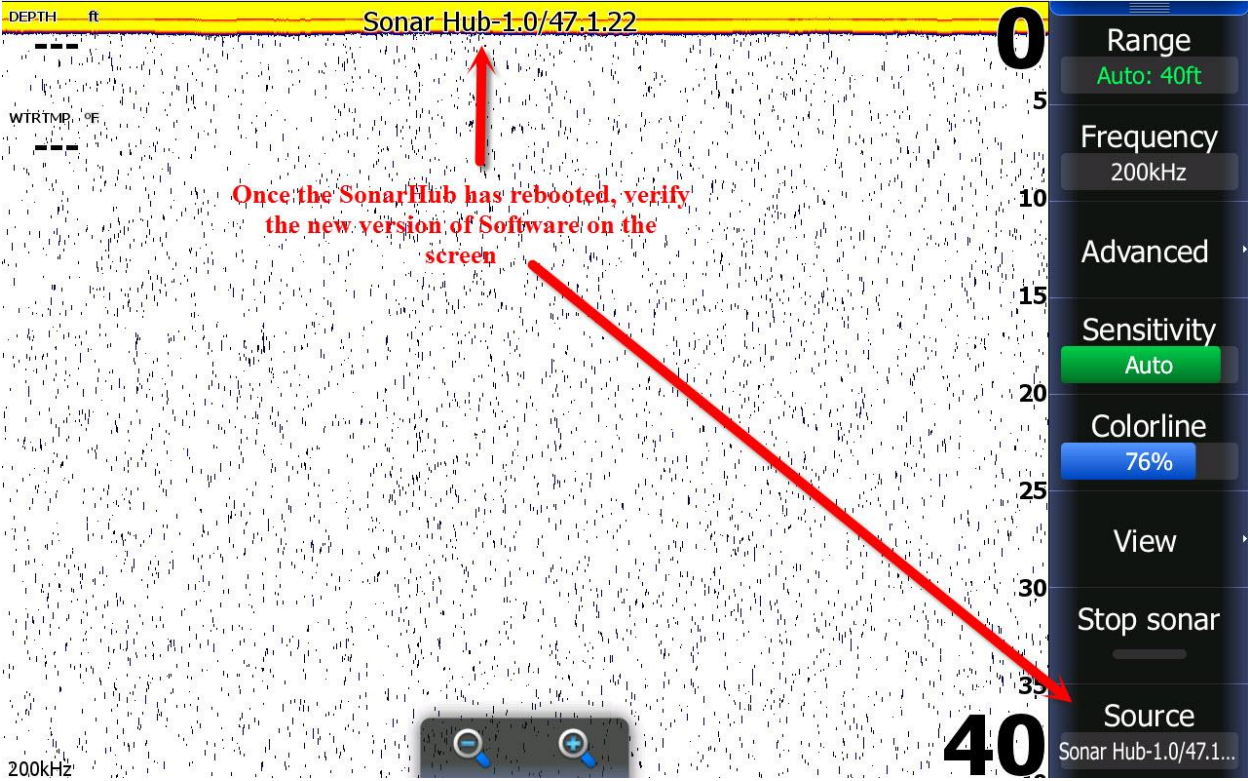
While the SonarHub is Rebooting, the Power Light will be red.



When the SonarHub is fully powered up and operational, the Power Light will be green.



Once the SonarHub is operational, the Sonar screen will show the SonarHub and new software version at the top of the screen and in the bottom right corner of the screen.



Please check the software version of the SonarHub once updating is completed. Updated version should read SonarHub-1.0-47.1.26-8.0.28295-r1. If the software version on the display matches the SonarHub has been successfully upgraded. You are now ready to disconnect the upgraded SonarHub and connect another SonarHub and repeat the process.