

AUTOPILOT BUYERS GUIDE



Over 60 years & 43 NMEA awards
Trust Simrad to keep you on course.

SIMRAD

Go With Confidence

THE AUTOPILOT ADVANTAGE

Autopilot is one of the most satisfying upgrades you can add to any boat...

Compensating for wind and tide, a Simrad autopilot frees you from constant course corrections when you're busy trawling for game fish, planning your next destination, or just cruising.

Simrad's autopilot systems give you reliable and accurate control over your heading, without years of experience at the helm – saving you time and fuel by making efficient turns, and keeping you closer to your planned course.

Predetermined turn patterns and features such as automatic depth-contour following assist with fishing or diving: taking the helm so you have more time to spend on the offshore activities you love. When combined with a chartplotter such as Simrad's

touchscreen-based NSS series, Simrad autopilots not only manage your current heading, but provide full course-control.

Set waypoints simply by tapping where you want to go on-screen, and your autopilot will take you there.

Need to navigate around an unexpected obstruction? Dodge functionality lets you do so without disengaging the autopilot. Once you've avoided the obstacle, your Simrad autopilot will bring you back on your original course.

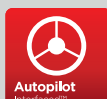
A Simrad autopilot system acts like a trusted extra crewmember, ensuring there's always someone at the helm – even when you've got your hands full elsewhere on the bridge.



SIMRAD AT THE HELM



Simrad is a brand you can trust, with over 60 years of proven experience, 43 NMEA awards for its autopilot solutions, and more installed autopilots in operation today than any other brand.



We have the widest range of control options available, including integration with our Simrad multifunction chartplotters, standalone autopilot displays, remote steering levers, and even joystick control with our QS80 QUICKSTICK™.

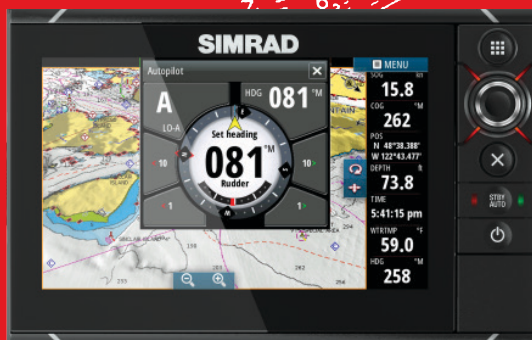


Simrad autopilots can steer almost any boat – cable steered, power assisted, hydraulic assisted, solenoid or electronic – with steering systems and autopilot computers to suit recreational vessels from 18-100 foot.

MAKE THE MOST OF YOUR TIME ON THE WATER



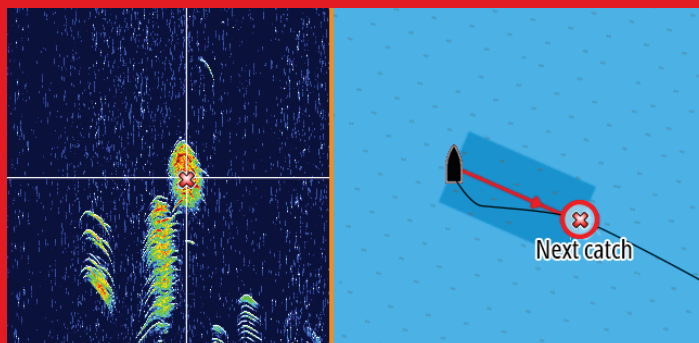
Stay in control: Our range of dedicated autopilot displays and controllers lets you create a control scheme that best fits your boating life.



Bring it all together: Integrate with a Simrad chartplotter/multifunction display to control your autopilot from a modern glass-bridge installation.



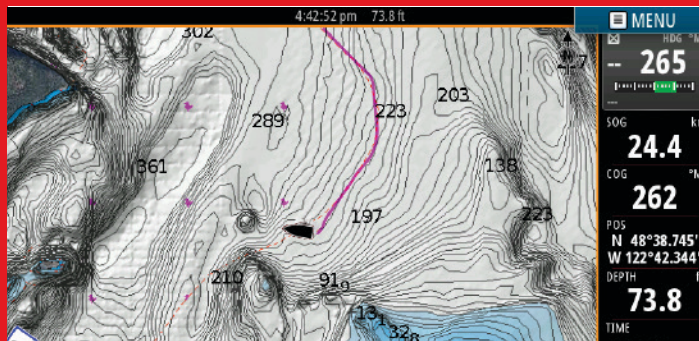
Chart your course: MFD integration gives you full course control with route navigation – lay down waypoints with just a touch.



Trackback: Combining a Simrad echosounder, chartplotter, and autopilot makes it easy for sportfishers to track back to promising targets right from the sonar view.



Maintain your heading: Our NoDrift steering compensates automatically for wind and current, without having to set routes or waypoints.



Follow the fish: Depth Contour Steering lets sportfishers automatically follow the contour of a dropoff or ledge.


What's right for your boat?



1 Choose Your Control Option
With a Simrad autopilot, the choice of display and controller – the parts of your autopilot you'll actually see and interact with – is up to you.

2 Know your steering system
Below deck, the steering mechanism and size of your boat decide what sort of autopilot computer and drive system you'll need – the hardware that actually moves your rudder and keeps track of its position.

3 Select your accessories
Add a steering lever or QuickStick™ joystick for precise heading control, easily create a dual-helm setup, or integrate your autopilot with sonar, radar and satellite navigation.

 An authorised installer will ensure you get the right Simrad autopilot system for your vessel, and that it's set up to deliver the reliability and accuracy you need on the water.

AUTOPILOT PACKAGES



IS40 PILOT PACK 000-11486-001

The IS40 pack combines an OP10 keypad with an IS40 full colour display. Features a full set of configurable instrument pages as well as a dedicated autopilot page.

Also includes:

AC12 RC42 RPU80

\$ 2250 SRP (excl.)



NSS7 PILOT PACK 000-11487-001

7" colour Autopilot & Chart/MFD Pack for outboard boats. Includes echosounder, rotary dial, full AP integration.

This is the only controller you need, or you can add additional optional displays or controllers.

Also includes:

AC12 RC42 RPU80

\$ 2500 SRP (excl.)



AP24 HELM DRIVE PACK 000-10908-001

Our most economic pack, with AP24 controller and S-drive unit for smaller boats with cable steer outboard engines.

Also includes:

AC12 FC40 S-TYPE

\$ 1800 SRP (excl.)



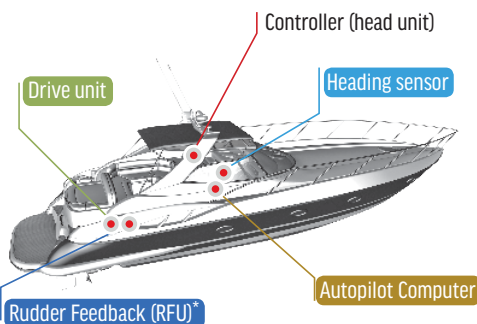
AP24 VRF PILOT PACK AP2403VRF

The AP24 VRF Autopilot Pack is a complete auto steering solution, designed for boats with outboard engines up to 45ft in length.

Also includes:

AC12 RC42 RPU80

\$ 1900 SRP (excl.)



* if required, rudder feedback will give improved course holding, but a slightly more complicated installation.



1

Select your controller

NSO evo2

Modular Performance Navigation System

16, 19 and 24-inch touchscreen or non-touch displays

Full Pilot Control - Super Easy Operation

Perfect for motoryachts, cruisers, and larger sportfishing boats

NSS evo2

Combo GPS/Sonar and Chartplotter "All-in-One" Displays

7, 9, 12 and 16 inch touchscreen displays

TouchSensible™ rotary dial and keypad controls

Full Pilot Control - Super Easy Operation

Fits most power cruising and sportfishing boats

NSO OP40 CONTROLLER

Provides full autopilot control on non-touch NSO evo2 displays

Combine with touchscreen displays for the best of both controls

Rotary dial and alphanumeric keypad

Tactile feedback and reliable control in all conditions



Go With Confidence



DESIGNED TO STEER YOUR BOAT

With dedicated autopilot button, rotary-dial steering on TouchSensible™ models, and full on-screen autopilot controls, our multifunction displays are all you need to control your Simrad autopilot.



AP70 COMMERCIAL GRADE AUTOPILOT:

For more information on our Professional line of Autosteering solutions at www.pro.simrad-yachting.com

NSS SPORT

Recreational chartplotter/MFD system with built-in GPS & echosounder

7, 8 and 12-inch touchscreen displays

TouchSensible™ rotary dial and keypad controls

Full autopilot control

AP24 & AP28 DEDICATED AUTOPILOTS

Dedicated autopilot display and controller

AP28 model includes rotary dial for easy heading adjustment

Use for standalone pilot systems or boaters that have limited dash space

Easy to operate; standalone or as an additional pilot control station



IS40 + OP10

Display and keypad provide full autopilot control

Full-colour IS40 instrument panel can also show wind speed, depth, boat speed, heading, engine data and more

QS80 QUICKSTICK™







Intuitive joystick for precision steering

Full Control including STDBY/AUTO

Simple and Easy to Operate


Great add on to any Simrad system

2 Select your AP System based on your steering system

A. Know your steering system	B. Used on Typical Boat Types	Corepack	Pump/Drive	
Hydraulic & Hydraulic Power Assisted (with RAM or Cylinder)	 Less than 35ft	Single Outboards	RPU80 21116165 Provides ideal response time of 10-13 secs for a typical hyd. cylinder (8-10 cubic in) to move full port to full starboard. AC12 Low Current computer for use with RPU80 and Solenoids.	
		Twin Outboards (Single hyd. cylinder <15 cubic in)		Low Current Virtual Rudder Feedback (VRF) AC12 RC42 000-11037-001
	 35-50ft	Inboards (steering cylinders < 15 cubic in)	Low Current w/Rudder Feedback AC12 RC42 RF300 000-11036-001	
		Twin/Triple/Quad Outboards (Dual Cylinder or Cylinder Capacities 10-33 cubic in)	High Current -Virtual Rudder Feedback (VRF) AC42 RC42 000-11039-001	RPU160 21118203 Provides ideal response time of 12-13 secs for a typical dual hyd. cylinder (20 cubic in) to move full port to full starboard. AC42 High Current computer for use with RPU160.
Electronic Steering Systems (Steer by Wire)	 25-70ft	Optimus 360	Optimus Kit 000-10906-001 RC42 000-10613-001 SG05 RC42	Not required - Electronic Steering integrates the drive
		Yamaha Helm Master™	Yamaha Kit 000-11286-001 SG05 RC42	
		Volvo IPS/EVC	Volvo Kit SG05 RC42	
		Viking Viper	Viper Kit SG05 RC42	
Helm Drive Cable Steered (Teleflex/Morse Steering)	 Less than 32ft	Single Outboards	Low Current Virtual Rudder Feedback (VRF) AC12 RC42 000-11037-001	S-Drive Helm Pump 000-10907-001
Solenoid Steering (Larger Vessels)	 	Inboards (Dual Cylinder or Cylinder Capacities 10-33 cubic in)	Low Current w/Rudder Feedback AC12 RC42 RF300 000-11036-001	
Mechanical Steering (Cable and Quadrant - Sailing Systems)	 	For the best in Sailboat Autosteering applications, visit www.bandg.com		

Note: This is by no means a comprehensive guide. For more detailed information and complete specifications - please visit your authorized Simrad dealer and/or visit www.simrad-yachting.com

3 Select your accessories

Remote Controller Options ↓						
 QS80	 OP10	 FU80	 NF80	QS80 Joystick Steering 000-10184-001 OP10 Wired Remote 000-10932-001 FU80 Follow Up remote unit 000-10298-001 NF80 Non Follow Up remote unit 000-10185-001		
Additional Displays ↓						
 NSS Sport	 NSS evo2	 AP24	 AP28	 IS40	Any Simrad NS Series MFD Consult Catalog AP24 4" Autopilot Display Head 22096267 AP28 Autopilot Control Head 22096366 IS40 colour Autopilot head and data repeater 000-10931-001	
Alternative Heading and Feedback options ↓						
 RF25N	 RF300	 RF45X	 FC40	 RC42N	 HS70	RF25N NMEA 2000 Rudder Feedback 000-10756-001 RF300 Standard Rudder Feedback 20193744 RF45X Medium Feedback Rudder Reference 22011415 FC40 Fluxgate Compass 22090187 RC42N NMEA2000 Rate Compass 000-10613-001 HS70 High Performance GPS Compass 000-10453-001

The Autopilot checklist

Step 1: Select Your Controller

What control options do I want?

Dedicated Controller:

- OP 10 / IS 40
- AP24*
- AP28

Integrated Navigation System:

- NSO evo2 System
- NSS evo2 System
- NSE System
- NSS Sport System*

*Refer to *Autopilot Packages* to see if a complete system package works for you

Step 2: What Corepack and drive do I need (Based on Steering System table)

- Low Current w/Virtual Rudder Feedback
- Low Current w/Rudder Feedback
- High Current w/Virtual Rudder Feedback
- High Current w/Rudder Feedback
- Other:
(e.g. required SimNet backbone, different Heading Sensor, upgrade to Professional Pilot)

What Pump or Drive do I need? (Consult Step 2 Table)

- RPU8o
- RPU16o
- Other:
(e.g. mechanical or linear)
- Not required - I have electronic steering system
- Not required - I already have an autopilot pump installed

Step 3: Select Accessories from Accessory Table

Do I want remotes, upgrades or any additional steering stations?

EUROPE/ MIDDLE EAST/AFRICA

Navico Logistics Europe BV
Donker Duyvisweg 56
3316 BM Dordrecht,
The Netherlands

Tel: + 31 78 65 30 000
Fax: +31 78 65 30 055



© Navico 2014. All trademarks are property of their respective owners.
Products, features and specifications are the most recent available and are
subject to change without notice. No liability can be accepted for errors or
omissions in this document.

Visit our website for a
list of certified dealers



Use a QR Code
reader app on your
smartphone to access
Simrad-Yachting.com

985-10799-001

SIMRAD

Simrad-Yachting.com